

# Buddha

s e e d s





# Buddha s e e d s

Buddha Seeds means professionalism and quality. Our catalog of seeds stands out for its varieties, developed with big effort and dedication. Good is not enough, we demand the best, and that's why our team of qualified professionals make the difference in our varieties.

For the development of our strains, we follow a scientific method, carried out by highly trained personnel, experts in various disciplines and supported by the most modern technology. We let this process take as much time as it needs to reach the results our scientists are looking for.

This big technical investment paid off its fruits. Our work has been recognized by growers, who have rewarded us with large sales increases; and by other seed banks, with which we had the pleasure and honor to collaborate in developing their varieties. We have been authorized to publish several scientific papers thanks to our cooperation with several Universities and Research Centers in projects of medical cannabis and hemp.

In Buddha Seeds we have advanced in many research fields such as selection assisted by genetic molecular markers, cannabinoid analysis or the creation and characterization of polyploid individuals.

So, Buddha Seeds, pioneer in the development of autoflowering strains, has earned its place as one of the most recognized banks internationally.

More than 10 years in developing varieties to meet the expectations of expert growers around the world back us up.

And you can be sure we will make the headlines in the following years.



*For further information visit our blog, [www.buddhaseedblog.com](http://www.buddhaseedblog.com) where you will discover the latest news, you will be able to follow our cultivation tips and you will be updated on our new varieties.*

Follow us on our social networks.



[www.buddhaseedbank.com](http://www.buddhaseedbank.com)

# Magnum

## Autoflowering

This three-way hybrid, from the crossing of the most potent and productive varieties with rapid, vigorous and multi-branching growth, explodes in buds in the flowering stage.

Because of its dimensions we do not recommend growing Magnum indoors in large pots. Due to its size we recommend you to use small containers or to perform late transplants, helping to control their height when grown in small spaces.

This plant reaches its maximum splendor in exterior. Sown in soil or large pots, grows vigorously into an authentic monster, which makes the grower wonder if it is actually an autoflowering strain.

The aromas and flavors of this variety are fresh and spicy. Not forgetting its explosive power, creating a cerebral rush that increases its intensity until the point of uncontrollable laughter.

**Sex:** Feminized  
**Type:** Autoflowering  
**Genetics:** Hybrid with Sativa predominance  
**Environment:** Indoor/Outdoor  
**Cultivation time (growth + flowering):** 85 days.  
**Harvest m<sup>2</sup>:** 550 – 600 g  
**Harvest per plant:** 100- 250 g  
**Taste/Aroma:** Fresh and Spicy.  
**Effect:** Powerful, with uncontrollable laughter.

<b>1x</b>	<b>3x</b>	<b>10x</b>	<b>50x</b>
8,00 €	23,00 €	70,00 €	290,00 €



# Deimos

## Autoflowering

Hybrid of Indica descent mainly (Northern Lights), Deimos is the fruit of a selection through 7 generations, to get the characteristics of a cannabis classic in an autoflowering plant.

It grows large, high and wide. We have chosen the most branched specimens in the selection, with long side bifurcations producing buds almost as thick as the tip, thus gaining productivity without becoming excessively high. Close to 1 meter in height, because of its size becomes the ideal autoflowering for both outdoor and indoor.

Even the expert smokers pale under the power of Deimos, it is a devastating plant, its flavor is classic, sweet and penetrating. This is an ideal weed for relaxation, introspection, going to the cinema, medical uses or just to render that "smarty expert" friend absolutely couch-locked.

**Sex:** Feminized  
**Type:** Autoflowering  
**Genetics:** Hybrid with Indica predominance  
**Environment:** Indoor/Outdoor  
**Cultivation time (growth + flowering):** 75 days.  
**Harvest m<sup>2</sup>:** 450 – 525 g.  
**Harvest per plant:** 80 – 100 g  
**Taste/Aroma:** Spicy nuances with fruity touches.  
**Effect:** Relaxing with a strong, comfortable physic effect.

<b>1x</b>	<b>3x</b>	<b>10x</b>	<b>50x</b>
8,00 €	23,00 €	70,00 €	290,00 €



# Buddha Purple Kush



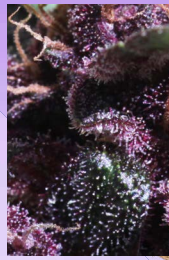
## Autoflowering

An autoflowering variety from the fertile valleys of the Hindu Kush region, our 100% purple and fast flowering variety is the beautiful girl of any garden, for its fascinating purple color and its unique smell, intense and characteristic.

Due to its compact size and short cycle it is ideal for the impatient grower.

Its Indica high, without becoming excessively narcotic, invites to the relaxation without couch-locking.

**Sex:** Feminized  
**Type:** Autoflowering  
**Genetics:** Hybrid with Indica predominance  
**Environment:** Indoor/Outdoor  
**Cultivation time (growth + flowering):** 70 days.  
**Harvest m<sup>2</sup>:** 350 – 400 g  
**Harvest per plant:** 50 – 60 g  
**Taste/Aroma:** Soft dyes to sandalwood and hash.  
**Effect:** Mildly Narcotic.



<b>1x</b>	<b>3x</b>	<b>10x</b>	<b>50x</b>
7,00 €	20,00 €	60,00 €	245,00 €

# Syrup



## Autoflowering

Hybrid obtained by crossing autoflowering varieties with the sweetest Indicas.

It stands out for its columnar morphology and ramifications on its base. These features make Syrup the best choice to grow in Sea of Green indoors. Outdoors, it is great for balconies and hidden gardens.

It is the fastest autoflowering plant in our bank, ideal for the most impatient growers or for those who want to obtain good yield all year round.

Nobody remains indifferent under Syrup's effects, and it is a real delicacy for connoisseurs due to its fruity flavor with nuances to ginger and elderberry.

**Sex:** Feminized  
**Type:** Autoflowering  
**Genetics:** Hybrid with Indica predominance  
**Environment:** Indoor/Outdoor  
**Cultivation time (growth + flowering):** 65 days.  
**Harvest m<sup>2</sup>:** 375 – 450 g  
**Harvest per plant:** 70 – 85 g  
**Taste/Aroma:** Sweet and fruity.  
**Effect:** Narcotic, medical.



<b>1x</b>	<b>3x</b>	<b>10x</b>	<b>50x</b>
7,00 €	20,00 €	60,00 €	245,00 €

# Red Dwarf

## Autoflowering

Red Dwarf is a hybrid that was born to maintain the autoflowering pattern of his "sister" White Dwarf. We have chosen the best traits after a selection process, made in each of their parents, for more than 15 generations. We must emphasize above all the production, speed and the aromatic intensity.

This combination of features has favored Red Dwarf explosive growth. Red Dwarf has a peculiar form of chandelier due to its multiple ramifications, and this form helps to support the compact floral clusters that give off an exceptional smell difficult to hide.

**Sex:** Feminized  
**Type:** Autoflowering  
**Genetics:** Hybrid with Indica predominance  
**Environment:** Indoor/Outdoor  
**Cultivation time (growth + flowering):** 65 days.  
**Harvest m<sup>2</sup>:** 400 – 500 g  
**Harvest per plant:** 80 – 130 g  
**Taste/Aroma:** Penetrating hard to hide, wild fruit flavors.  
**Effect:** Narcotic, relaxing.

<b>1x</b>	<b>3x</b>	<b>10x</b>	<b>50x</b>
6,00 €	18,00 €	52,50 €	215,00 €



# White Dwarf #2

## Autoflowering

After more than 10 years working on our White Dwarf, coming from 2 potent Indicas, we are proud to introduce our White Dwarf #2 as an improved version, bigger, stronger and more stable. This strain is backed by more than 35 generations of this genetics, which populated the balconies and terraces of many cannabis growers, looking to hide from uninvited attention in the beginnings of the autoflowering strains.

It fulfills the demands of the most impatient growers and those who want fast harvest, but its strong indica effect will leave nobody disappointed.

White Dwarf's increased height and strong structure support the weight of the crystal coated buds.

It's a safe bet for beginner growers due to its resistance to pests.

**Sex:** Feminized  
**Type:** Autoflowering  
**Genetics:** Hybrid with Indica predominance  
**Environment:** Indoor/Outdoor  
**Cultivation time (growth + flowering):** 65 days.  
**Harvest m<sup>2</sup>:** 410 – 450 g  
**Harvest per plant:** 80 – 100 g  
**Taste/Aroma:** Wood and elderberry.  
**Effect:** Relaxing.

<b>1x</b>	<b>3x</b>	<b>10x</b>	<b>50x</b>
7,00 €	20,00 €	60,00 €	245,00 €



# Panakeia High Terpenes CBG

0.0% THC

Panakeia High Terpenes is a non-psychoactive hemp variety with a high terpene content. At last, a CBG-rich variety that can be enjoyed in a pleasurable way with much more taste and smell.

Panakeia High Terpenes is the improved version of Panakeia, a variety developed by Hemp Trading and the Polytechnic University of Valencia. This non-psychoactive (0,0% THC) and highly medicinal strain now offers a wide variety of terpenes with sweet, fruity and woody notes.

At Buddha Seeds we wanted to enrich the experience of CBG varieties, traditionally poor in terpenes. The result is very satisfactory, especially on the olfactory level.

Panakeia High Terpenes is coming to the "smokable hemp" market as one of the best non-psychoactive, terpene-rich varieties.

**Sex:** Feminized  
**Type:** Photo-dependent  
**Genetics:** Indica  
**Indoor flowering:** 60 days.  
**Harvest m<sup>2</sup>:** 450 g  
**Harvest month outdoor:** End of September (northern hemisphere)  
March (southern hemisphere)  
**Outdoor production per plant:** 1000 - 1500 g  
**Taste/Aroma:** Aromatic herbs and fruity notes  
**Effect:** Relaxing

**3x** 40,00 €  
**10x** 120,00 €



# Calamity Jane

Autoflowering

Calamity Jane is an American tough girl, who stands out for her high THC content.

Calamity Jane proves wrong those who say that autoflowering varieties are less potent. Its high THC content can compete face to face with non autoflowering varieties in the market.

It's the fruit of our work using the Grimm's Brothers american classic genetics. Our Seed Bank has developed many lines and has finally selected the new Calamity Jane, a Sativa predominant hybrid, created through crossings with our Magnum and using massal selection and chromatography analytic techniques.

After years of applying top notch techniques to select the best specimen, we have increased the potency in all our varieties. Nonetheless Calamity Jane is the paramount, reaching THC levels up to 20%.

**Sex:** Feminized  
**Type:** Autoflowering  
**Genetics:** Hybrid with Sativa predominance  
**Environment:** Indoor/Outdoor  
**Cultivation time (growth + flowering):** 75 days.  
**Harvest m<sup>2</sup>:** 550-600 g  
**Outdoor growing:** Autoflowering.  
**Harvest per plant:** 100 - 250 g  
**Taste/Aroma:** Combination of sweet notes with a penetrating citrus-flavored, softly citrus flavored.  
**Effect:** Euphoric and psychedelic cerebral.

**1x** 8,00 €  
**3x** 23,00 €  
**10x** 70,00 €  
**50x** 290,00 €



# Medikit Auto CBD

## Autoflowering



Medikit Auto is the autoflowering version of our medicinal variety Medikit, perfect for those who need early harvests and a plant rich in pure CBD with hardly any THC. It stands out for being a variety easy to take care of, with sweet aromas and pleasant effects.

The growth of Medikit Auto is quick, and noticeable for its branches that get covered of dense and resinous buds during the flowering.

Medikit Auto is a variety very pleasant to the palate, and its high levels of terpenes transmit the best nuances. Medikit Auto has prevailing sweet and citrus aromas such as lemon, orange and / or mango, with notes of earth and pine.

**Sex:** Feminized  
**Type:** Autoflowering  
**Genetics:** Hybrid with Indica predominance  
**Environment:** Indoor/Outdoor  
**Cultivation time (growth + flowering):** 70-75 days.  
**Harvest m<sup>2</sup>:** 400 - 450 g  
**Harvest per plant:** 70 - 80 g  
**Taste/Aroma:** Sweet notes and citrus fruits such as lemon, orange and / or mango. Earthy nuances and pine.  
**Effect:** Improves mood, controls stress and anxiety.



<b>1x</b>	<b>3x</b>	<b>10x</b>	<b>50x</b>
7,00 €	20,00 €	60,00 €	245,00 €

# Vesta

## Autoflowering



Vesta is an autoflowering hybrid developed by Buddha Seeds between two well-known American and European lines. It stands out for its strength, reaching a medium-large size, where the central bud dominates, heavy and covered with aromatic resin. The structure of this plant opens in multiple productive branches, which end up covered in hard, compact and resinous buds.

Vesta is an easy-to-grow variety, resistant, suitable for both the most expert growers looking for superior plants, and inexperienced growers who need resistant and stress-bearing plants.

It is a true delight for the taste buds, combining the best of the two lines from the two continents. First, the European line brings you the fruity citrus flavor between grapefruit and mandarin. Moments later, the American line gives you an acid taste that stays long in the throat, even after the smoke is gone. Its potent, relaxing and pleasurable high is suitable for medicinal uses.

**Sex:** Feminized  
**Type:** Autoflowering  
**Genetics:** Hybrid with Indica predominance  
**Environment:** Indoor/Outdoor  
**Cultivation time (growth + flowering):** 75 days.  
**Harvest m<sup>2</sup>:** 450 g  
**Outdoor growing:** Autoflowering.  
**Taste/Aroma:** Citric and fruity between mandarin and grapefruit.  
**Effect:** Powerful, relaxing and pleasurable.  
Suitable for medicinal uses.



<b>1x</b>	<b>3x</b>	<b>10x</b>	<b>50x</b>
7,00 €	20,00 €	60,00 €	245,00 €

# Morpheus



This non-autoflowering variety fulfills the mythological saying "in the arms of Morpheus", god of dreams, with whom you will immerse yourself in a psychic excursion without losing lucidity.

Morpheus is an hybrid with relaxing and soothing therapeutic properties, thanks to its high CBD content. Buddha Seeds worked hard to stabilize the THC and CBD levels in a 1:1 ratio of up to 20% of total cannabinoids. It is the solution for the contemporary user who aims to obtain important productions together with high percentages of THC and CBD.

Other important characteristics of Morpheus are its branched and balanced structure, and a powerful growth that culminates in a resinous flowering. In the last weeks of flowering, you can see at a glance the abundant trichomes covering the flower, offering that special and desired look, adding up to its citrus flavors that makes this variety a delight for the most demanding users.

**Sex:** Feminized  
**Type:** Photo-dependent  
**Genetics:** Hybrid  
**Indoor flowering:** 65 days.  
**Harvest m<sup>2</sup>:** 450/480 g  
**Harvest month outdoor:** Beginning of October.  
**Outdoor production per plant:** 1000/1500 g  
**Taste/Aroma:** Citrus with sweet flavors and certain earthy nuances.  
**Effect:** Cerebral and pleasant.



1x

8,00 €

3x

23,00 €

10x

70,00 €

50x

290,00 €

# Buddha Purple Kush



Buddha Purple Kush non-autoflowering of Buddha Seeds is our tribute to those nice shared moments, the essence of which has been back in this attractive and modernized version. A flashback that will take you back to those wonderful 90's.

Highly dedicated work focussed on stabilizing the maximum qualities of each of its three ancestors, obtaining a non-autoflowering hybrid with high indica power.

With explosive growth, Buddha Purple Kush culminates with a burst of colors in the flowering phase in just 60 days. The intense purple tonality that acquires each one of the individuals stands out from the first week. It can culminate, according to environmental conditions, with a genuine chromatic range of bright colors thanks to its abundant resin. Ideal for making your own extracts (dry/ice).

Buddha Purple Kush is resistant to humidity, perfect for regions with shorter outdoor growing time, it is iron against pests and very productive. In short, simple to care for with high yields in the harvest.

The effect of Buddha Purple Kush is pleasant, ideal to reach your relaxing time after a stressful day. Inducer of the appetite for those more complicated days. You'll appreciate berries tasty with notorious earthy nuances.

**Sex:** Feminized  
**Type:** Photo-dependent  
**Genetics:** Hybrid with Indica predominance  
**Indoor flowering:** 60 days  
**Harvest m<sup>2</sup>:** 400/480 g  
**Harvest month outdoor:** Beginning of October.  
**Outdoor production per plant:** 900/1500 g  
**Taste/Aroma:** Berries with notorious earthy nuances.  
**Effect:** Relaxing, pleasant, appetite-inducing



1x

7,00 €

3x

20,00 €

10x

60,00 €

50x

245,00 €



# Quasar

Quasar comes from a pure indica and a backcrossed sativa that unites the best of both families in a successful hybrid.

With a vigorous growth, shortens the cultivation cycles indoors and gets beautiful individuals outdoors; Quasar has a strong structure that supports the weight of abundant buds, so hard and compact that looks like its flowers have been pressed.

Amazing potency, strong effect, an euphoric high without nervousness.

With Quasar we believe that we have found the perfect Indica-sativa equilibrium that will satisfy both connoisseurs and commercial growers by its yield.

**Sex:** Feminized  
**Type:** Photo-dependent  
**Genetics:** Hybrid  
**Indoor flowering:** 75 days.  
**Harvest m<sup>2</sup>:** 450/600 g  
**Harvest month outdoor:** End of September.  
**Outdoor production per plant:** 1500/2000 g  
**Taste/Aroma:** Fresh with mint nuances  
**Effect:** Strong and euphoric high without nervousness.



1x

8,00 €

3x

23,00 €

10x

70,00 €

50x

290,00 €

# Pulsar

Pulsar is a hybrid of Dutch and Central American sativas. Extremely vigorous growth genetics; tremendously expansive.

One of its most peculiar characteristics is its high production for such a great sativa ancestry. Indoors, it must be controlled by severe pruning of tips or grown in scrog, since it tends to occupy all available space. Outdoors we recommend to plant after sowing season to avoid monstrous size individuals.

Energizing, very stimulating, hallucinogenic effect of uncontrollable laughter. It is not a plant for inexperienced growers or smokers due to its potency.

**Sex:** Feminized  
**Type:** Photo-dependent  
**Genetics:** Hybrid with Sativa predominance  
**Indoor flowering:** 75 days.  
**Harvest m<sup>2</sup>:** 450 g  
**Harvest month outdoor:** Second half of October.  
**Outdoor production per plant:** 700 g  
**Taste/Aroma:** Nuances with spices and musk.  
**Effect:** Euphoric high. Sativa strength.



1x

8,00 €

3x

23,00 €

10x

70,00 €

50x

290,00 €

# Medikit CBD

Buddha Seeds worked hard to meet the needs of the most demanding users who opt for non-psychoactive CBD varieties. We have achieved levels of cannabinoids up to 20% of CBD in some individuals, while THC content is around 1%.

Medikit is a variety that, on the palate, takes us to a complex and elegant sensation, and its high levels of terpenes transmit us predominantly sweet and citrus aromas such as lemon, orange and / or mango, with notes of soil and pine.

Medikit is an hybrid whose sativa part is provided by a backcrossed Californian Harlequin to make it a homozygous CBD, while its Indica ascendant comes from a selective crossing of Latin American CBD varieties.

Its explosive growth culminates in a sublime flowering. Its final production is significant too, as the quality of its flowers, voluminous and compact, and coated with a crystalline layer of resin.



**Sex:** Feminized

**Type:** Photo-dependent

**Genetics:** Hybrid with Indica predominance

**Indoor flowering:** 75 days.

**Harvest m<sup>2</sup>:** 450-480 g

**Harvest month outdoor:** Second half of October.

**Outdoor production per plant:** 1000 g - 1.500 g

**Taste/Aroma:** Citrus like lemon, orange and / or mango. Earthy and pine nuances.

**Effect:** Improves mood, and ease anxiety & tension.

**1x**

8,00 €

**3x**

23,00 €

**10x**

70,00 €

**50x**

290,00 €



# Kraken

This is an Indica hybrid that has been developed selecting potency and yield capacity, with a branched structure. Its dense, compact and gigantic buds make Kraken an incredibly productive variety with a fresh, almost menthol flavor.

It is ideal for growers who are looking for maximum power and it's also perfect for those who seek to make profitable crops and look for large harvests.

KRAKEN's strength is Remarkable, by its demolishing and blunt effect, along with its extreme duration, which places Kraken as an Indica strain not to forget.

Monstrous in all aspects.

**Sex:** Feminized

**Type:** Photo-dependent

**Genetics:** Hybrid with Indica predominance

**Indoor flowering:** 58/63 days.

**Harvest m<sup>2</sup>:** 500 g

**Harvest month outdoor:** End of September.

**Outdoor production per plant:** 500 g / 1.500 g

**Taste/Aroma:** Fresh with menthol or floral nuances.

**Effect:** Very relaxing.

**1x**

8,00 €

**3x**

23,00 €

**10x**

70,00 €

**50x**

290,00 €

